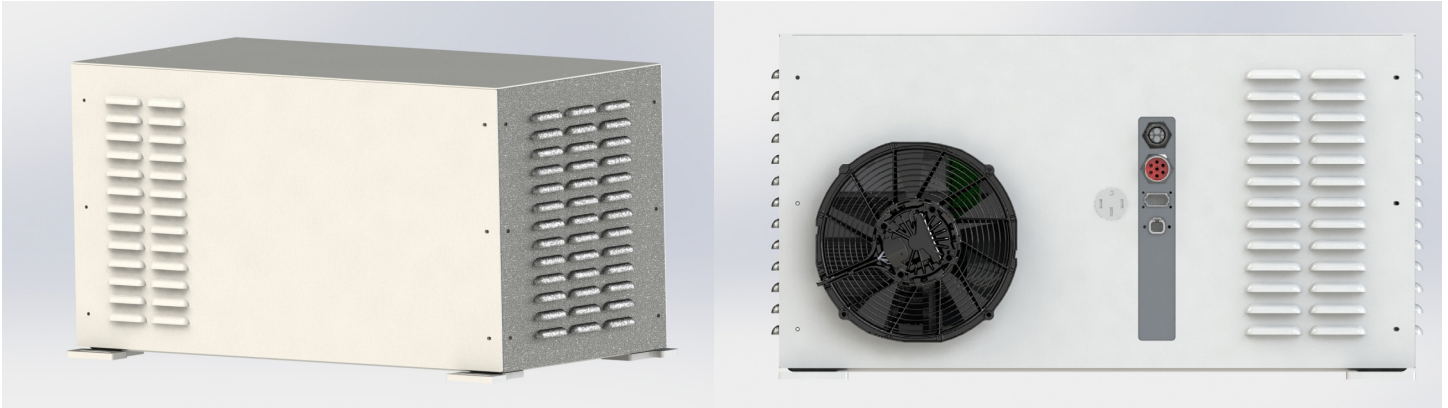


SYSTEM SPECIFICATIONS

SmartPX



Battery Capacity	14.4 kWh	21.6 kWh
AC Output		
Voltage	120V and 240V	
Current (Max)	100A (120V) or 50A (240V)	
Power Rating	12kVA	
Frequency	60 Hz	
Export Power		
Current Rating	~73 A at 13.7V (~36A at 27.4V)	
Power Rating	1000W	
Battery		
Chemistry	Lithium NMC	
Storage Capacity	14.4 kWh	21.6kWh
Estimated Life	10 years to 80% of initial capacity	
Battery Management System	Integrated	
Operating Temperature Range*	-25°C to +45°C ambient temperature	
Charging		
Default Charger	1300W 100-260VAC 50/60Hz Input	
Recharge Time (Default Charger)	10 hrs	15 hrs
Fast Charger (Add-on Option)	6000W SAE J1772 EV Interface	
Recharge Time (Fast Charger)	2.25 hrs	3.25 hrs
User Interface		
Primary	7" Color Touch Screen + Key Switch + Generator Toggle Switch	
Dimensions and Weight		
Length	41.2" (1046 mm)	
Width	21.5" (547 mm)	
Height	22.4" (570 mm)	
Weight	600 lbs (273 kg)	700 lbs (318 kg)
Notes		
*Ambient temperature range is estimated based on cell temperature limits. Actual performance may vary based on operating environment, storage conditions when not in use, etc.		