

ENGINES OFF, CABS COMFORTABLE



ALL-DAY NO-EMISSIONS CAB COMFORT AND WORK

Replace Idling for Cab Comfort and Light Hydraulics

- All-day power for cab HVAC (supports 48VDC)
- Clean power for occasional hydraulic use
- Ample power export for lights, tools, etc.
- No more need for inverters or auxiliary batteries
- Standalone or cabinet installation

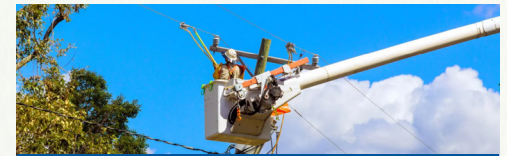
ONE BOX. ANY UPFIT. EVERY CHASSIS.
ZERO INTEGRATION.



WORKFORCE JUST WORKS

<p>WORK-FIRST</p> <p>Zero emissions at worksite</p> <p>All-day, diesel-equivalent work</p> <p>Every truck in the fleet</p>	<p>ONE BOX</p> <p>One-day install</p> <p>Easy retrofit and transfer</p> <p>1:1 idling / gen-set replacement</p>	<p>SEAMLESS</p> <p>Operator-controlled quick switch to diesel</p> <p>Electrification never brings truck down</p> <p>OEM & app agnostic, ~0 chassis integration</p>	<p>CLOUD-MANAGED</p> <p>Remote site telematics to asset level</p> <p>Reports, alerts, remote troubleshooting</p> <p>Defensible TCO and green reporting</p>	<p>2.5 YEAR PAYBACK</p> <p>Savings on diesel and gas</p> <p>Savings on engine & DPF maintenance</p> <p>20% increase in fleet lifespan</p>
---	--	---	---	--

A FORCE FOR THE ENTIRE ORGANIZATION



OPERATORS

- Clean air, no noise, less heat
- All-day work, diesel-like power (operator-controlled quick switch to diesel)
- All-day cab comfort & power
- Clear worksite communications



TECHNICIANS

- Easy install, fewer diesel repairs
- Remote troubleshooting for less downtime
- Upskilling advanced tech

ANY UPFIT, ANY CHASSIS IN 1, 2, 3



Pick a spot, bolt it on



Connect hydraulics (if applicable)



Plug in (or charge on-the-go)

REMOTE TROUBLESHOOTING FOR LESS DOWNTIME

INCLUDED!



FEATURES

- Remote site telemetry
- Remote diagnostics
- Remote troubleshooting

AUDITABLE REPORTS

- Sustainability
- Adoption & ROI
- Ops risk analysis
- On-demand data



MANAGERS

- Quantitatively monitor remote worksites down to the asset
- Manage & mitigate ops risk & quantify TCO
- Use data-driven worksite ops for effective fleet planning

DATA & SPECS

- Clean-sheet, hyper-efficient architecture
- Deployed across US, Canada, Caribbean, Australia and New Zealand

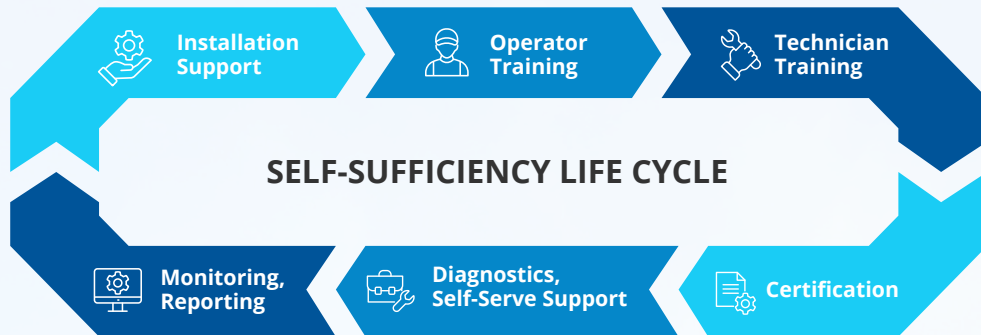
APPLICATIONS



MADE & OPERATED IN THE U.S.A.



WITH YOU AT EVERY STEP



THE VIATEC DIFFERENCE



AUTOMOTIVE-GRADE SOLUTIONS

- Seamless compatibility across OEMs and platforms
- Automotive-grade reliability, power, and product range



FIELD-PROVEN E2E MANAGEMENT

- Intelligent battery, drivetrain, hydraulics, and power management
- Self-service install, troubleshoot, repair, and transfer



SCALABLE DESIGN

- LEGO block solution architecture
- Easily scale for larger use cases and hydraulic flows



REALTIME ANALYTICS

- Cloud-based diagnostics and environmental/TCO analytics
- From per vehicle to whole fleet

Export	
Primary	3000W @ 12VDC + 120VAC
Secondary	3000W @ 48VDC
Hydraulics	
Optional	Up to 5 GPM, up to 3000 psi
Battery	
Estimated Life	10 years to 80% of initial capacity
Charging	
Method	Plug-in
Onboard Charger	1500W, 120V/ 240V AC
Recharge Time*	~5.5 hrs
User Interface	
Primary	Dash-mounted Touch Encoder display
Dimensions and Weight	
Length	22" (558 mm)
Width	18.5" (458mm)
Height	24" (615mm)
Weight	280 lbs (91 kg)
Notes	
*Based on shore power charge.	

WANT TO LEARN MORE?

833-4-VIATEC (833-484-2832) or sales@viatec.us

