

KEEP YOUR ENGINES, ELIMINATE IDLING



ALL-DAY DIESEL-EQUIVALENT NO-EMISSIONS ePTO WORK

Replace Idling for PTO

- All-day ePTO hydraulic power
**Operator-controlled quick switch to diesel*
- Cab comfort, lights, tools
- Quiet worksites, enhanced safety
- Trucks up to 80 ft.
- Easy, field-proven, & reliable
- Calibrated to feel like traditional PTO

**ONE BOX. ANY UPFIT. EVERY CHASSIS.
ZERO INTEGRATION.**



WORKFORCE JUST WORKS

<p>WORK-FIRST</p> <p>Zero emissions at worksite</p> <p>All-day, diesel-equivalent work</p> <p>Every truck in the fleet</p>	<p>ONE BOX</p> <p>One-day install</p> <p>Easy retrofit and transfer</p> <p>1:1 idling / gen-set replacement</p>	<p>SEAMLESS</p> <p>Operator-controlled quick switch to diesel</p> <p>Electrification never brings truck down</p> <p>OEM & app agnostic, ~0 chassis integration</p>	<p>CLOUD-MANAGED</p> <p>Remote site telematics to asset level</p> <p>Reports, alerts, remote troubleshooting</p> <p>Defensible TCO and green reporting</p>	<p>2.5 YEAR PAYBACK</p> <p>Savings on diesel and gas</p> <p>Savings on engine & DPf maintenance</p> <p>20% increase in fleet lifespan</p>
---	--	---	---	--

ANY UPFIT, ANY CHASSIS IN 1, 2, 3

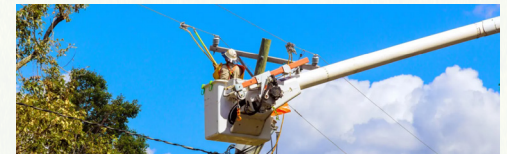
Pick a spot, bolt it on
Connect hydraulics
Plug in

REMOTE TROUBLESHOOTING FOR LESS DOWNTIME

- FEATURES**
- Remote site telemetry
 - Remote diagnostics
 - Remote troubleshooting
- AUDITABLE REPORTS**
- Sustainability
 - Adoption & ROI
 - Ops risk analysis
 - On-demand data

INCLUDED!

A FORCE FOR THE ENTIRE ORGANIZATION



OPERATORS

- Clean air, no noise, less heat
- All-day work, diesel-like power (operator-controlled quick switch to diesel)
- All-day cab comfort & power
- Clear worksite communications



TECHNICIANS

- Easy install, fewer diesel repairs
- Remote troubleshooting for less downtime
- Upskilling advanced tech



MANAGERS

- Quantitatively monitor remote worksites down to the asset
- Manage & mitigate ops risk & quantify TCO
- Use data-driven worksite ops for effective fleet planning

DATA & SPECS

- 3rd Gen in full production
- Based on Zero Motorcycles powertrain
- Deployed across US, Canada, Caribbean, Australia and New Zealand
- Deployed in ~32 USA IOU fleets

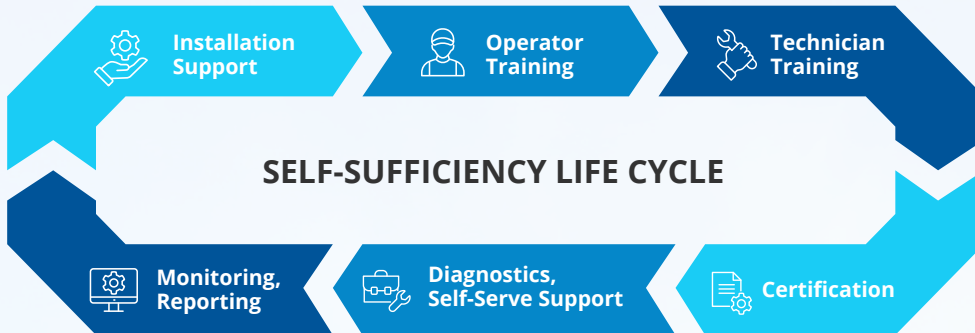
APPLICATIONS



MADE & OPERATED IN THE U.S.A.



WITH YOU AT EVERY STEP



THE VIATEC DIFFERENCE



AUTOMOTIVE-GRADE SOLUTIONS

- Seamless compatibility across OEMs and platforms
- Automotive-grade reliability, power, and product range



FIELD-PROVEN E2E MANAGEMENT

- Intelligent battery, drivetrain, hydraulics, and power management
- Self-service install, troubleshoot, repair, and transfer



SCALABLE DESIGN

- LEGO block solution architecture
- Easily scale for larger use cases and hydraulic flows



REALTIME ANALYTICS

- Cloud-based diagnostics and environmental/TCO analytics
- From per vehicle to whole fleet

Battery Capacity	7.2 kWh	14.4 kWh	21.6 kWh	28.8 kWh
Hydraulics				
Output Pressure	Up To 4000 psi (275 bar)			
Output Flow	Up To 21 GPM (79 LPM)			
Export Power (Optional)				
Power Rating	2000W			
Battery				
Estimated Life	10 years to 80% of initial capacity			
Recharge Time				
120V	5 hrs	10 hrs	15 hrs	20 hrs
Level 2	1 hr	2.25 hrs	3.25 hrs	4.5 hrs
User Interface				
Primary	Indicator LEDs on enclosure			
Dimensions and Weight				
Length	36.5" (928 mm)		50" (1270 mm)	
Width	18" (458 mm)			
Height	24.5" (622 mm)			
Weight	440 lbs (200 kg)	510 lbs (231 kg)	650 lbs (295 kg)	720 lbs (327 kg)

WANT TO LEARN MORE?

833-4-VIATEC (833-484-2832) or sales@viatec.us

