

BOOST THE WAY YOU WORK



PORTABLE POWER FOR EVS & MORE



WORKFORCE JUST WORKS



SHAREABLE

Top off 6 EVs simultaneously



RESILIENT

10-year performance



PORTABLE

Rapid deployment anywhere



CONVENIENT

3-hour recharge



POWERFUL

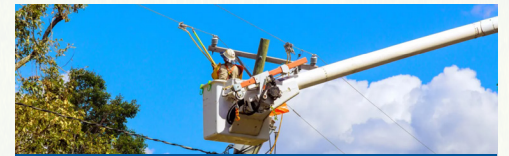
12kVA up to 129.6 kWh (6 x 21.6 kWh)



EXPANDABLE

Modular design

A FORCE FOR THE ENTIRE ORGANIZATION



OPERATORS

- Readily accessible power for EVs and more, even at remote worksites
- 1:1 replacement for diesel generators for clean air, no noise, less heat
- Clear worksite communications



TECHNICIANS

- Remote troubleshooting for less downtime
- Upskilling advanced tech



MANAGERS

- Expanded use cases for fleet EVs
- Quantitatively monitor remote worksites down to the asset
- Manage & mitigate ops risk & quantify TCO
- Use data-driven worksite ops for effective fleet planning

APPLICATIONS

MADE & OPERATED IN THE U.S.A.



EV Pick-Ups



Delivery Vans



Passenger EVs



EV Work Trucks



Your Application

REMOTE TROUBLESHOOTING FOR LESS DOWNTIME

INCLUDED!



FEATURES

- Remote site telemetry
- Remote diagnostics
- Remote troubleshooting

AUDITABLE REPORTS

- Sustainability
- Adoption & ROI
- Ops risk analysis
- On-demand data

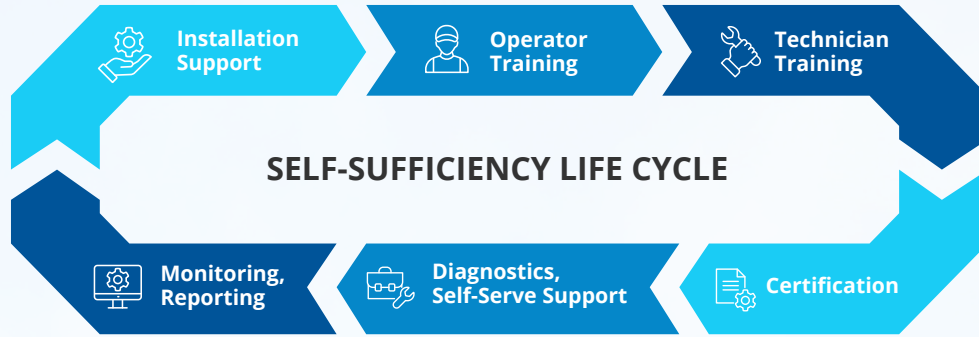


DATA & SPECS

- 12kVA power output, up to 129.6 kWh (6 x 21.6 kWh)
- Scalable configurable design adaptable to fleet size and charging needs: 1x2, 2x2, 4x2, 6x2
- Field-tested technology based on Viatec's proven system technology
- Cost-effective plug-and-play, uses standard outlets
- User interface: 7" color touch screen + key switch + generator toggle switch



WITH YOU AT EVERY STEP



SPECIFICATIONS (For each module configured in 1x2, 2x2, 4x2 or 6x2)

Battery Capacity	14.4 kWh	21.6 kWh
AC Output		
Voltage	12kVA	
DC Export		
Power Rating	1000W	
Battery		
Estimated Life	10 years to 80% of initial capacity	
Recharge Time		
120V	10 hrs	15 hrs
Level 2	2.25 hrs	3.25 hrs
User Interface		
Primary	7" Color Touch Screen + Key Switch + Generator Toggle Switch	
Dimensions and Weight		
Length	41.2" (1046 mm)	
Width	21.5" (547 mm)	
Height	22.4" (570 mm)	
Weight	600 lbs (273 kg)	700 lbs (318 kg)

THE VIATEC DIFFERENCE



AUTOMOTIVE-GRADE SOLUTIONS

- Seamless compatibility across OEMs and platforms
- Automotive-grade reliability, power, and product range



FIELD-PROVEN E2E MANAGEMENT

- Intelligent battery, drivetrain, hydraulics, and power management
- Self-service install, troubleshoot, repair, and transfer



SCALABLE DESIGN

- LEGO block solution architecture
- Easily scale for larger use cases and hydraulic flows



REALTIME ANALYTICS

- Cloud-based diagnostics and environmental/TCO analytics
- From per vehicle to whole fleet

WANT TO LEARN MORE?

833-4-VIATEC (833-484-2832)
or sales@viatec.us

